



PRODUCT HIGHLIGHTS AND ADVANTAGES

- Licence Exempt ETSI and FCC 5GHz Frequency - eliminates regulatory delays.
- 11 (ETSI), 4 (United Kingdom), 5 (USA), 236 (Unregulated Countries) non-overlapping channels allows many units to be deployed in the same area.
- User selectable channel width - 5 MHz, 10 MHz, 20 MHz or 40 MHz for scalable deployment and interference resiliency.
- Over 70 Mbps TCP/IP speed and over 10000 packets per second.
- Next day deployment enables rapid service activation and payback.
- Cost effective alternative to leased lines.
- Outstanding software features: bridging, routing, NAT routing, CPE and PtP Bridge modes, SNMP, web management, advanced QOS, DHCP client/server, firewall, PPPoE client and high grade encryption.
- Backward compatible with other vendors 802.11a compliant devices.
- Optimal cost / performance ratio: highly cost efficient solution.
- Dynamic Frequency Selection (DFS) complies with ETSI EN 301 893 and OFCOM regulationsto allow co-existence with Radar systems.
- Robust outdoor architecture: ensures un-precedented range and reliability, minimizes RF cable loss connecting to antenna thus providig outstanding performance and communication distance
- Superior Atheros XR™ powered OFDM radio - enables NLOS (near line of sight) operation in dense urban environ-ments.
- Non-compromising security - over the air 128 bit keyAES encryption.
- Compact integrated solution - easy to install and operate.

AirJet 5G-23

Outdoor Wireless Ethernet Bridge



The **NETBRIDGE AirJet 5G-23**, a member of NETBRIDGE products family, is a high performance 5GHz outdoor wireless client bridge designed to provide secure and reliable point to multipoint operation for Carriers, Internet Service Providers, Business Enterprises and Government organisations.



The **NETBRIDGE AirJet 5G-23** is capable of operating as wireless router or multi-mac bridge to NETBRIDGE 5G and standard 802.11a Access Points, supporting over 70 Mbps TCP/IP Net Throughput over its air interface. The **NETBRIDGE AirJet 5G-23** leverages both robust outdoor technologies and Orthogonal Frequency Division Multiplexing (OFDM) modulation in the same product - with features such as Forward Error Correction coding, used to combat multi-path and noisy environments, the product operates seamlessly and efficiently in challenging environments with stable throughput. The system also features advanced algorithms for automatic selection of modulation schemes to maximize the data rate and improve spectral efficiency using latest technology based on Atheros® Radio Modules. These inherent advantages of the **NETBRIDGE AirJet 5G-23** enable service providers to provide an effective PtMP solution to a significantly higher subscriber base that would otherwise be inaccessible.

Using Features such as PacketAggregation two **NETBRIDGE AirJet 5G-23** devices operating as PtP bridges can handle over 10000 packets per second. Combining high frequency reuse, selectable channel width with advanced interference management and immunity techniques, the **NETBRIDGE AirJet 5G-23** bridges conserve valuable spectrum by allowing service provider to cover an extensive geographical area with a minimum number of channels.

While operating with NETBRIDGE 5G base station the **NETBRIDGE AirJet 5G-23** device can be configured to utilize proprietary polling protocol that overrides shortages of the standard 802.11a mode. NETBRIDGE proprietary WPM (Wireless Polling MAC) is a full featured TDMA/TDD protocol implementation on top ofAtheros®AR5006XS hardware, using PacketAggregation, Adaptive Polling Algorithm and disabling of the CSMA Backoff Mechanism. WPM also provides link adaptation technology and improves bandwidth, robustness, and overall performance foreach subscriber.

NETBRIDGE AirJet 5G-23 software features such as bridging, routing, NAT routing, CPE and PtP Bridge modes, SNMP, web management, advanced QOS, DHCP client/server, firewall, PPPoE client, high grade encryption, port forwarding, remote syslog and built in troubleshoot utilities make the **NETBRIDGE AirJet 5G-23** the most flexible and cost effective broadband wireless CPE platform available today.

All **NETBRIDGE AirJet 5G-23** products are robust outdoor units, that are built to perform in difficult climatic environments and withstim« — even the harshest weather conditions. Built in passive Power over Ethernet system _ allows only one ethernet cable to be used for both data and power transmission for up to 200 feet.

Datasheet

AirJet 5G-23



Interface

Ethernet Interface	100 Base-T Ethernet (RJ-45) with POE
Wired LAN Protocol	IEEE 802.3 (CSMA/CD)
Wireless Interface	OFDM, TDD
Wireless LAN Protocol	IEEE 802.11a, 802.11a Turbo

Radio

Supported Frequencies	Europe (ETSI): 5500-5700 MHz (11 channels) with DFS (Dynamic Frequency Selection), (Depending on User configurable Regulatory Domain)	USA (FCC): 5745-5825 MHz (5 channels), UK (OFCOM FWA): 5735-5835 MHz (4 channels) with DFS (Dynamic Frequency Selection), Africa&Asia (OTHER): 4920-6100 MHz (236 channels, 5MHz step)						
Modulation Technique	BPSK, QPSK, 16QAM, 64QAM							
Channel Width	User Selectable - 802.11a: 20 MHz, 10 MHz, 5 MHz or 40 MHz (802.11a Turbo)							
Output Power	NETBRIDGE AIRJET 5G-23							
	ETSI:	≤ 30 dBm EIRP						
	OFCOM:	≤ 33 dBm EIRP						
	FCC, Africa:	≤ 47 dBm EIRP						
Bit Data Rate	54 Mbps	48 Mbps	36 Mbps	24 Mbps	18 Mbps	12 Mbps	9 Mbps	6 Mbps
Receive Threshold (including built-in antenna)	-95 dBm	-98 dBm	-103 dBm	-106 dBm	-110 dBm	-111 dBm	-112 dBm	-114 dBm

System

Processor	Intel XScale IXP422 266 Mhz Network Processor
Memory	32MB RAM, 4MB FLASH
RF Module	Atheros AR5006XS with XR Technology

Physical

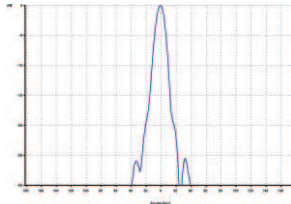
Dimensions	320 mm X 320 mm X 100 mm
Operating / Storage Temperature	-40°C - +70°C / -40°C - +85°C
Enclosure	AL IP65 Rated, Outdoor Mountable, Weather Protected
Power Adapter	48V / 0.4A DC, 802.3af Active Ethernet (Power over Ethernet Injector included)
LEDs	3 - Power, Ethernet LAN Activity, Wireless Activity
Mounting	Adjustable 60 mm Pole Mounting

Antenna

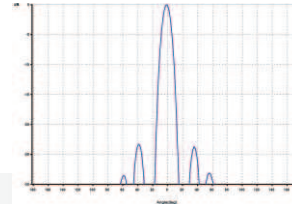
Type	23 dBi Flat Panel Antenna
-------------	---------------------------

Built-in Antenna Patterns

E-Plane



H-Plane



Operational Distance

Bit Data Rate	54 Mbps	48 Mbps	36 Mbps	24 Mbps	18 Mbps	12 Mbps	9 Mbps	6 Mbps
NETBRIDGE AIRJET 5G-23	6400 m.	8600 m.	11800 m.	14400 m.	18200 m.	22400 m.	32000 m.	39000 m.

Regulatory Compliance

CE certified, ETSI EN 301 8

Warranty

Two year, Limited

Contact Information:



Dialog İletişim Teknolojileri

Meydan Kavağı Mah. 12. Cadde Hanedan Apt. No: 24/9 Antalya / Türkiye

tel. +90-242-312 35 18 • fax. +90-242-311 23 32 • sales e-mail: info@netbridge.com.tr • technical enquiries: support@netbridge.com.tr • http://www.netbridge.com.tr